



**BABYLON IS AN EMERGING REAL ESTATE DEVELOPMENT AND INVESTMENT COMPANY WITH
A FOCUS ON PROFESSIONAL BUSINESS AND MEDIUM TO LONG-TERM INVESTMENT RELIABILITY.**

TABLE OF CONTENTS

2 PROJECTS

3 WHO WE ARE

4 DR.HOSSAM FARAG CEO

5 DOWN TOWN MAP

6 PARTNERS OVERVIEW

7 - 8 ZODIAC

ARCHITECTURAL AND INTERIOR DESIGN

9 - 11 ENG.ABDULLAH KHALIL

ARCHITECTURAL AND EXTERIOR DESIGN

12 - 14 ICON SMART SOLUTIONS

MEP SERVICES

15 - 17 PROF DR. ENG. AHMED FOAD SABRI

CONSTRUCTION CONSULTANT

18 - 21 DIYAR

PROJECT MANAGEMENT

22 - 23 DESIGN MASTERS

STRUCTURAL DESIGN

24 - 26 TETRA - ROWAD

ENGINEERING AND CONSTRUCTIONS

27 - 28 RO

BRANDING AND MARKETING AGENCY



 15763
www.babylonud.com

Who We Are

BABYLON URBAN DEVELOPMENT

Babylon is an emerging real estate development and investment company with focus on professional business and medium to guarantee long term investment reliability.

Inspired by Babylonia the historic culture with its prestige, famous wealth and innovative buildings; Babylon Urban Development is created based on concepts like: innovation, knowledge and unique architecture designs.

Vision

Offering the prime investment opportunities to our partners.

Mission

Creating the best investment value through building unique projects with distinctive features that offer the highest ROI (return on investment) in the market.

BABYLON URBAN DEVELOPMENTS

CHIEF EXECUTIVE OFFICER (CEO)

**Clinical Pharmaacist, holding MBA degree from
Edinburgh Business Schoolin Herriot What University in UK.**

**Hossam has more than 15 years' experience in many managerial positions in Middle East & Global region
in sales & marketing in the biggest multinational companies e.g. Pfizer, Novartis, Roche, J&J.**

**His recent position was Regional Marketing Director in Johnson & Johnson for Middle East region.
- Currently he is Co-Founder & CEO of Babylon Urban Development.**



DR.HOSSAM FARAG
PHARMA B, MBA



GREAT VISION WITH GREAT PARTNERS



ARCHITECTURAL AND INTERIOR DESIGN SERVICES FOR OUR PROJECT



ENG. SHADY AFIFI - ENG. MOHAMED TAWFIK

Since 2012, Zodiac Architects, Designers and Contractors has been providing architectural and design services nationwide.

In the last few years, we have designed more than 80K square feet of completed spaces and more than 60 projects. for over 10 years, Zodiac has been providing complete remodeling projects with VIP clients & official organization.



ENG. SHADY AFIFI - ENG. MOHAMED TAWFIK

WORKED WITH



ARCHITECTURAL AND EXTERIOR DESIGN SERVICES FOR OUR PROJECT



ENG. ABDALLAH KHALIL

- AN EXPERT IN REAL ESTATE DEVELOPMENT AND WINNER OF INTERNATIONAL AWARDS FROM PRESTIGIOUS BODIES.
- CERTIFIED FROM USA AS PROFESSIONAL PROJECT MANAGER.
- PROJECT MANAGER CERTIFIED BY PROJECT MANAGEMENT INSTITUTE OF UNITED STATES OF AMERICA (PMI).
- MASTERS OF BUSINESS ADMINISTRATION.

BRINGING SKILLS AND EXPERIENCE WITH KNOWLEDGE AND PROFICIENCY GAINED HIM EXPERIENCE
IN VARIOUS ASPECTS OF URBAN PLANNING INCLUDING DESIGN, CONSTRUCTION, PLANNING AND FIT-OUT.

KEY PROJECTS



DESIGNED, BUILD AND DEVELOPED MORE THAN 100 MCDONALDS RESTAURANT IN MIDDLE EAST INCLUDED THE ICONIC BRANCH THE BIGGEST MCDONALD'S BRANCH IN MIDDLE EAST AND AFRICA AND 3RD ON THE WORLD (KUWAIT TOWERS BRANCH)

MORE

KEY PROJECTS



**GULF TOWER: (KUWAIT) MIXED USE BUILDING
(ADMINISTRATIVE, RESIDENTIAL & COMMERCIAL)**



TRIO MALL (KUWAIT)



AL ARABI CLUB ADMINISTRATIVE BUILDING (KUWAIT)

AND OTHERS

MEP SERVICES FOR OUR PROJECT

I-con MEP Smart Solutions is a leading MEP company in Egypt specialized in providing unrivaled range of top-quality services and systems to Quality-Oriented organizations, focused on making their work, equipment and facilities stand out as paragons of operational efficiency and profitability.

Mechanical, Electrical and Plumbing coordination is the harmonization of all the building services with other disciplines that form the building fabric, structure and external envelope.



ENG. AHMED SHAWKY



I-CON
SMART
SOLUTIONS

WORKED
WITH

saloni
akilli mobilyalar

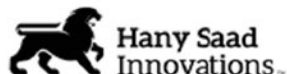
actis



A-part



HIGHEND
DESIGN
+ BUILD



El Mawardy
Jewelry



istikbal

hassan
ABOUSEDA
architects



L A Z B O Y



KEC-IDENTITY
ENGINEERING & CONSTRUCTION

ARTOFORM



HAF | HUSSAM ABOUL FOTOUH
ARCHITECTS & INTERIOR

legrand

Foster

DELTA
DORE

KESSEL

ELSEWEDY
CABLES

Schneider
Electric

CISCO

SAMSUNG

Panasonic

DAIKIN

Carrier

HIKVISION

IZOCAM

Nexans

aquatherm

Wheatland Tube

BOSE
Better sound through research.

TRIAX

PHILIPS

ARISTON

HAMZA
WATERTIGHT SOLUTIONS
SINCE 1949

SAVER

KNX

EMECO
ELECTRO MECHANICAL
COMPANY

GIACOMINI
WATER EMOTION

ERICO

furse

HID
HID CORPORATION

THORN

LG

MESC

Honeywell

KEY ADMINISTRATIVE PROJECTS

HSI HEADQUARTERS:

Scope of work: MEP // Re-Design and Execution.
Location: Fifth Settlement, New Cairo, Egypt.



POLYGON PROJECT:

Scope of work: MEP Design // Construction Execution.
Location: Sodic Business Park, Sheikh Zayed Compounds, Giza.



AKMON OFFICES:

Scope of work: MEP // Construction Execution.
Location: Sodic Business Park, Sheikh Zayed, Giza.



CONSTRUCTION CONSULTANT FOR OUR PROJECT

Doctorate degree from the University of Windsor in Canada.

- **Postgraduate degree from Ohio University in America.**
- **Master degree from Cairo University.**
- **Bachelor degree in civil engineering with very good degree with honors.**
- **Member of American Civil Engineers Society.**
- **Member of Canadian Civil Engineers Society▪**

Over 40 Years of Experience Prof.Dr. Ahmed Fouad Sabri Designed, build and Developed more than 100 projects in Middle East.



PROFFESOR DOCTOR.AHMED FOUAD SABRY

KEY PROJECTS



**NEFERTITI COMPOUND
IN (R7-N3)**



**CANADIAN UNIVERSITY
IN NEW CAPITAL (X1-05)**

KEY PROJECTS



**AL TAWHID WEL NOOR
MIXED USE BUILDING.**



**AL AZHAR UNIVERSITY
STAFF COMPOUND (R7-B2)**

PROJECT MANAGEMENT CONSULTATION FOR OUR PROJECT

Diyar is a company specializing in the management of construction and investment projects from the idea through to project decision-making and the work of facility studies, designs, legal procedures and time programs, all the way to overseeing the implementation and completion of construction, setting up the operating plan for projects, following them up, and evaluating the results to achieve the goals and the success of these projects



DIYAR FOUNDERS



DR. ENG. TAREK AL ORABI

- CHAIRMAN OF THE BOARD OF DIRECTORS
- ARCHITECTURAL CONSULTANT
- HE HOLDS A MASTER'S AND DOCTORATE IN BUSINESS ADMINISTRATION
- HE HOLDS A BACHELOR OF LAWS AND A MASTER OF FINANCIAL AND ECONOMIC SCIENCES
- PHD IN POLITICAL ECONOMY
- MEMBER OF THE EGYPTIAN ASSOCIATION FOR POLITICAL ECONOMY, LEGISLATION AND STATISTICS AND CHAIRMAN OF THE BOARD OF DIRECTORS OF THE ORABI GROUP OF COMPANIES IN EGYPT AND SAUDI ARABIA.



ENG. HESHAM SOLIMAN

- CHAIRMAN OF THE BOARD OF DIRECTORS
- EXECUTIVE DIRECTOR
- ARCHITECT
- EXECUTIVE DIRECTOR OF THE ORABI GROUP OF COMPANIES IN EGYPT AND SAUDI ARABIA
- MANAGING DIRECTOR OF LAMAR TOURISM COMPANY

DIYAR WAS INVOLVED IN MORE THAN 100 PROJECTS IN EGYPT & GULF REGION.

Scope of Work:

- 1- Construction work " concrete, EMP & Finishing for 16 Buildings'.
- 2- 4,500 m2 landscape & hard scape.
- 3- Renovation works for 150 villas.



Scope of Work:

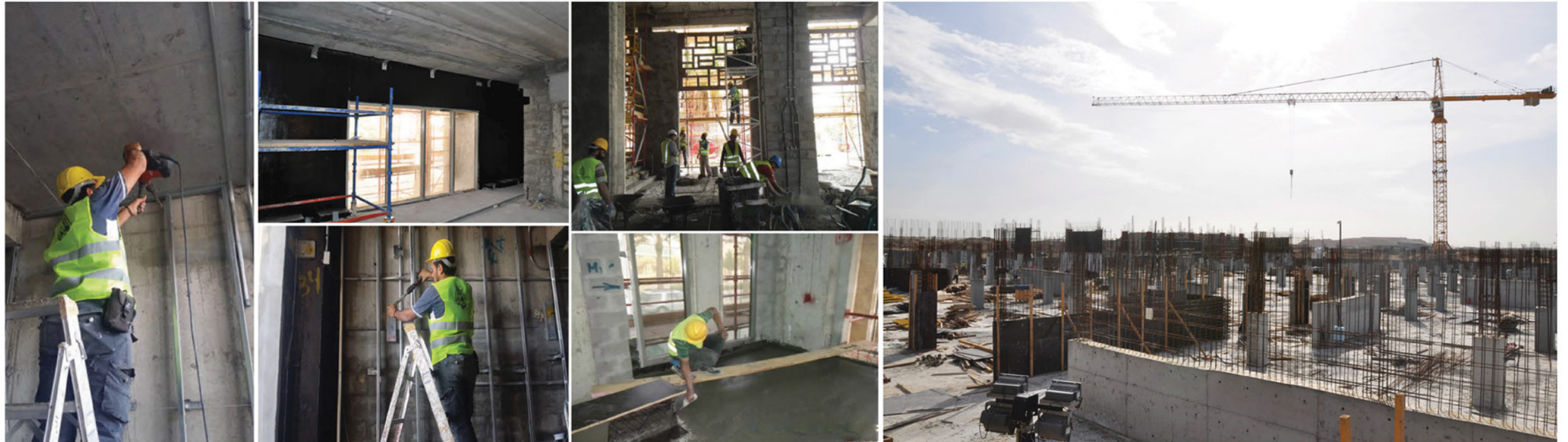
- 1- Project management consultation
 - All Construction Activity "Civil & Finishing".
 - All EMP Works.
 - Landscap & Hardscape.
 - Testing & Commission.
 - Furnitures & Equipments.



DIYAR WAS INVOLVED IN MORE THAN 100 PROJECTS IN EGYPT & GULF REGION.

Scope of Work:

- 1- Concret repair by clips & plates "new clips & repair existing" with all requires.
- 2- Repair Ext. precast jointes.
- 3- Ring beams & close precat opening.
- 4- Steel I beams.
- 5- Exterior & Interior Finishing.
- 6- All new concrete work.



STRUCTURAL DESIGN CONSULTANT FOR OUR PROJECT



PROF DR. ENG. AHMED EL-HADIDY, BENG, MSC, PHD

A sub-committee member of the 2020 Unified Egyptian code for steel structures.

He is an Associate Professor and Steel Structure Consultant who has more than 16 years' experience in Structural Engineering, with experience in a variety of industries and project types.

He is expert in using the Egyptian, European (EC) and American (ASCE) Specifications. manage & design more than 50 projects in his academic & real-life experience over 16Y.

1- The steel covering for the roof of Faculty of Law Tanta, Egypt

Multiple span steel frames using standard sections with an approximate area 2800 m²
Owner: Tanta University.



2- The steel covering for the roof of Faculty of Nursery Tanta, Egypt

Single span frames using standard sections with approximate area 600 m²
Owner: Tanta University



3- The steel covering for the roof of Faculty of Medicine Tanta, Egypt

Multiple span steel frames using standard sections with an area 5000 m²
Owner: Tanta University



4- The steel covering for the roof of Faculty of Pharmacy Tanta, Egypt

Single span steel frames resting on RC walls using standard sections.
Owner: Tanta University



5- The steel covering of the multi- function playground Tanta, Egypt

Single span frames using built-up sections with approximate area 1100 m²
Owner: Tanta Sport Club



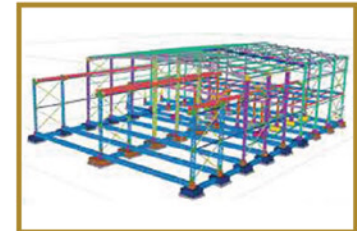
6- The steel covering of the stands of the multi-function playground - El-Shorouk City, Cairo, Egypt

Fixed-Free cantilever frames with span about 16.0 ms using tapered built-up sections



7- The steel covering for a warehouse - Yamen

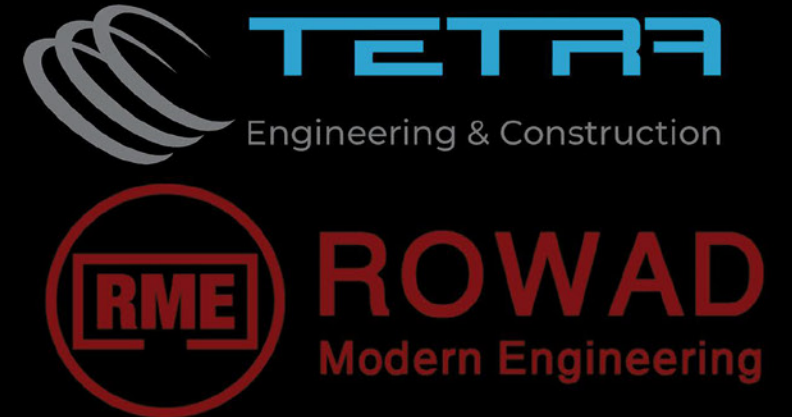
Single span tapered steel frames using built-up sections with an area about 3400 m²



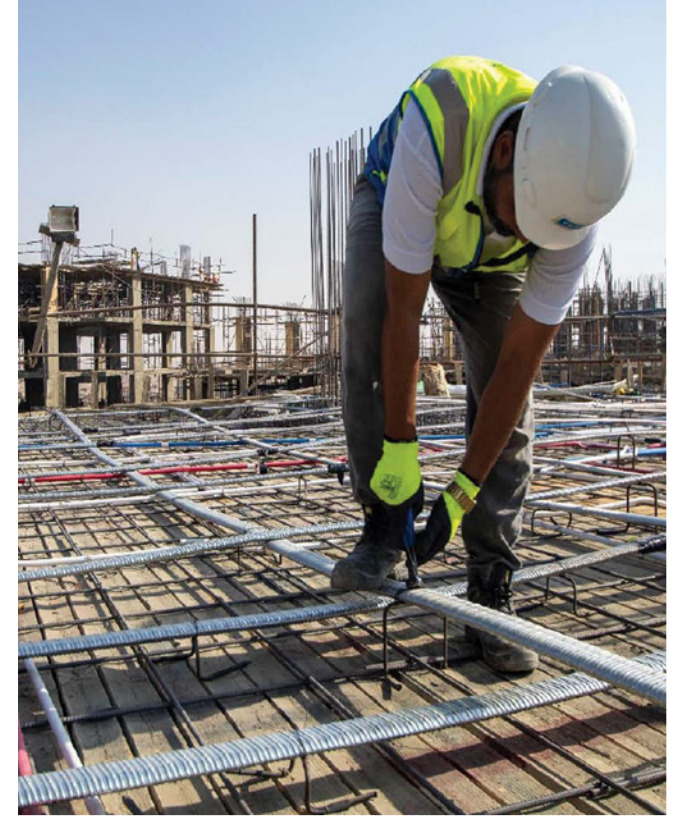
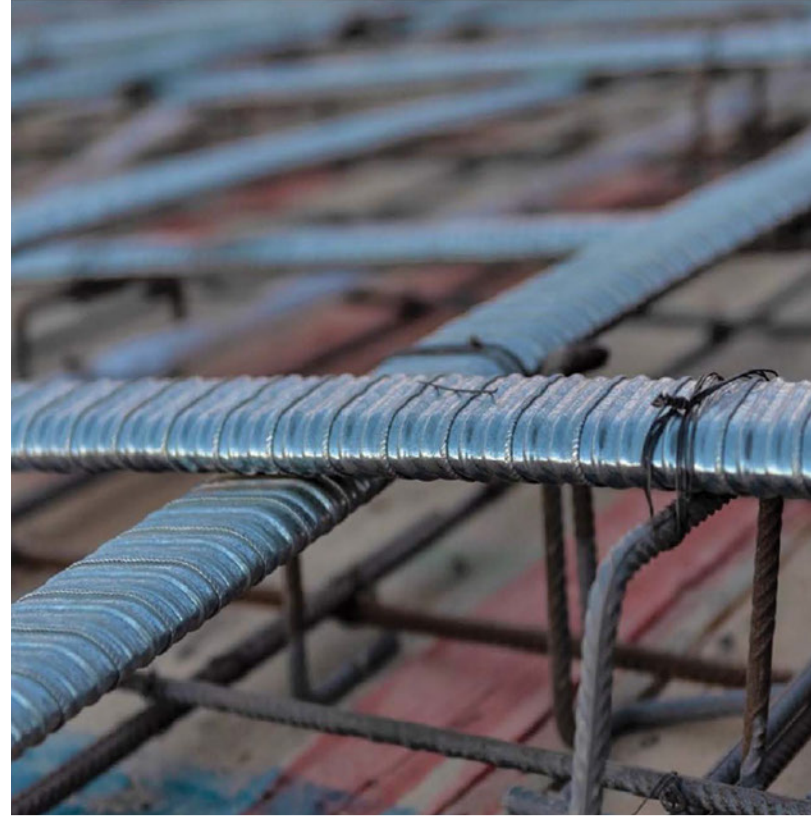
8- Steel covering for two celebration halls located in Tanta, Egypt

Single and multi-span steel frames using standard steel sections.

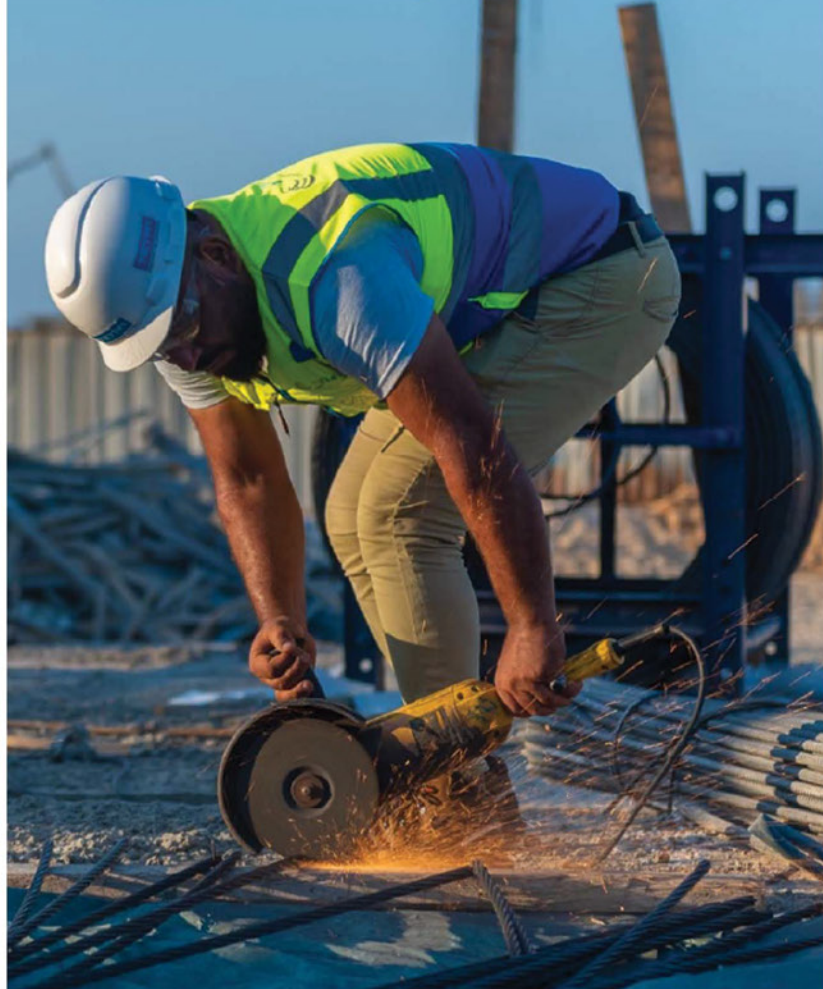
ENGINEERING & CONSTRUCTION



ACT "Advanced Construction Technology" founded in 2004 as one of the few specialized companies in Egypt that offers Post Tension Services for building. From 2008 till 2016 the company shut down the business in Egypt and the owner joined OVM as a managing partner in 2016 he established Tetra Engineering Solution which acquired Advanced Construction Technology and resumed the post tension activities, In 2017 Tetra launched "Solo System" as the first "Made in Egypt" mature Post Tensioning system for building. In July 2018 Tetra and Rowad Modern Engineering signed a partnership agreement whereas both parties established Tetra Engineering and Construction SAE as Joint Stock Company with a capital of 100 Million Egyptian Pound.



Tetra is a subsidiary from RME & El SEWEDY ELECTIC group (The owner of 1st PC strands factory in Egypt).



Today Tetra can offer several specialized “Design and Built” construction services through its diversified business line in the field of Post Tensioning slabs and bridges, Bearings, MSE walls, special bridge construction formwork and equipment, heavy lifting, ground engineering and special structural repair

BRANDING AND MARKETING AGENCY BASED IN EGYPT AND UAE



We like to say “put your box outside” we’re people who have a creative thinking minds, It reminds us always to look up for something new, we love to think imaginatively using new ideas instead of traditional or expected ideas for each services we do

You will find that working with us is like having an additional assistant on your marketing team because we build ideas and deliver effort

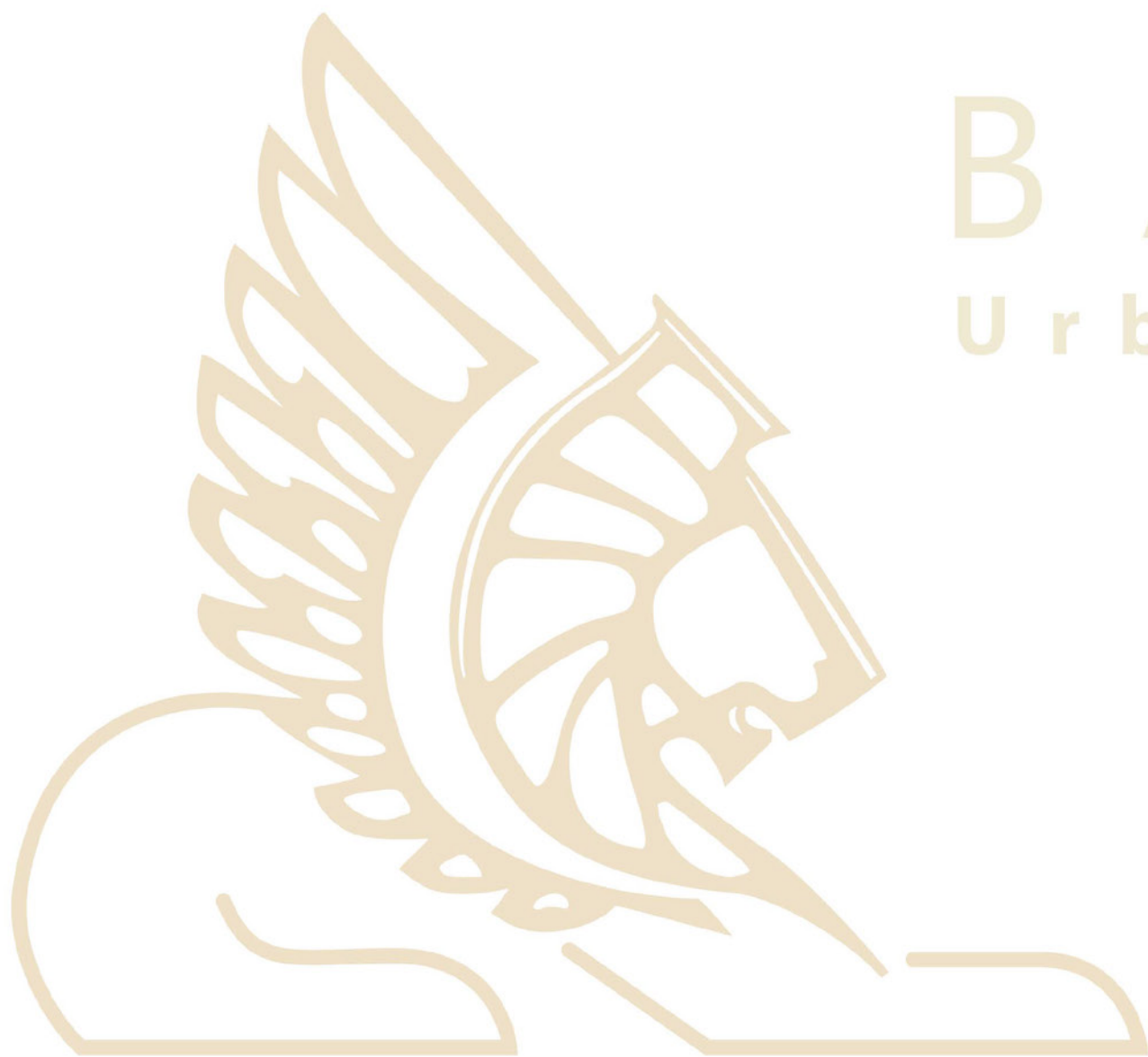
BO

WORKED WITH



GREAT VISION WITH GREAT PARTNERS





B A B Y L O N

U r b a n D e v e l o p m e n t

- 📍 North 90th St. New cairo
Cairo Business Plaza, Office No.305
- 📌 📷 /babylondevelopment
- 🐦 /BabylonUrban
- 🌐 /company/babylondevelopment
- 🌐 www.babylonud.com